

**GENERAL PLAN AMENDMENT EXHIBIT
SVSP PARCELS FD-32 AND FD-41**

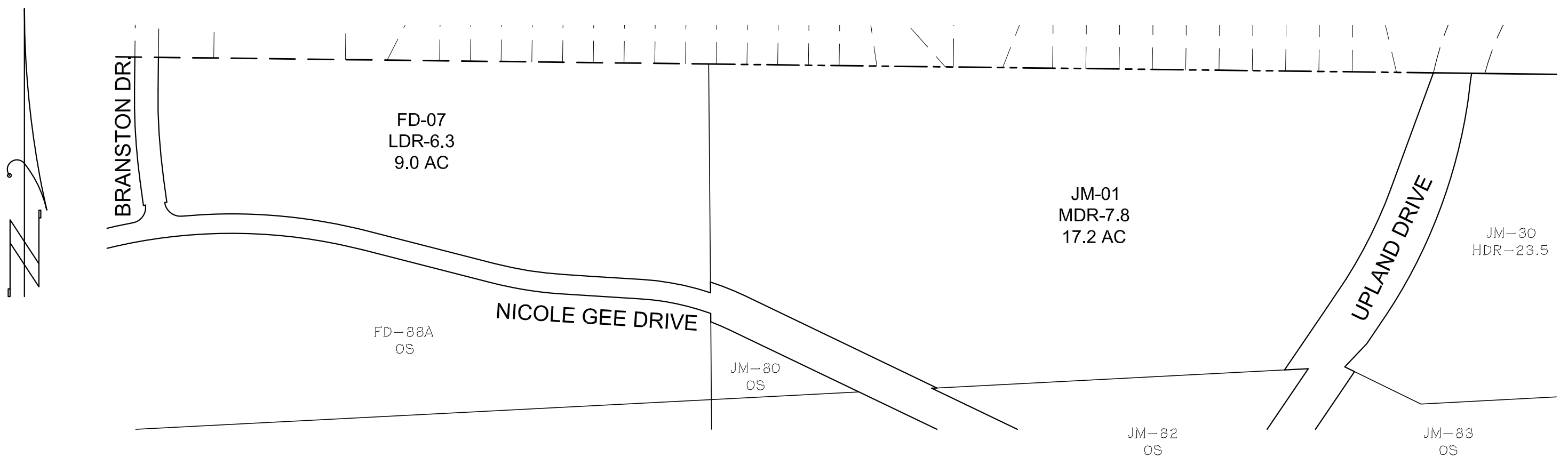
SCALE: 1"=200'

JOB #: 20-06-022

DATE: JUNE, 2021

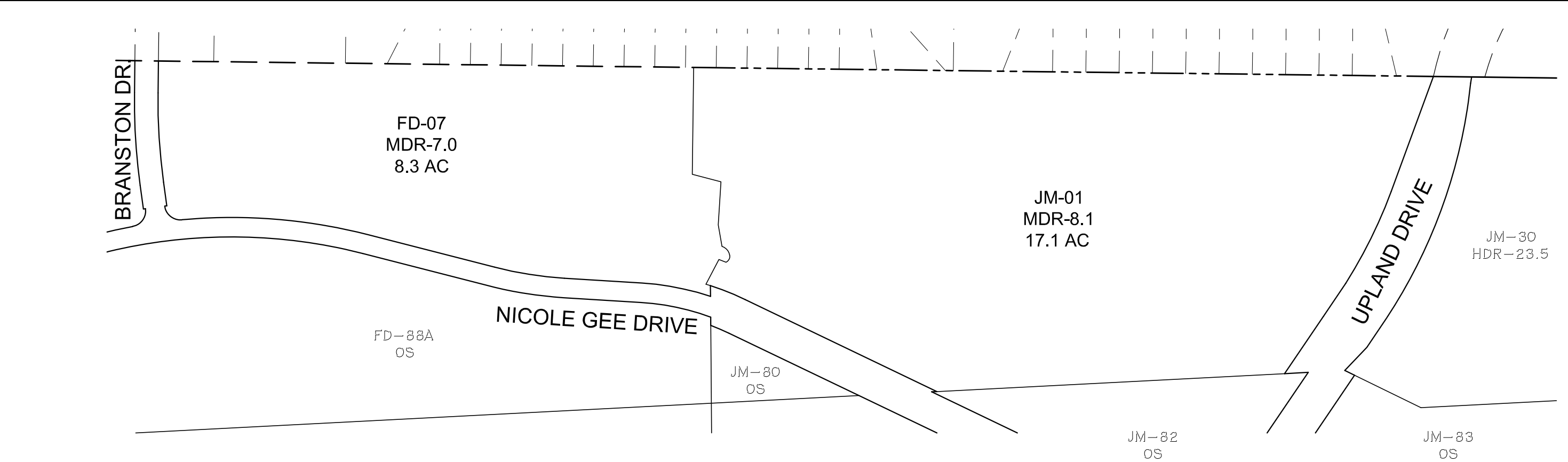
CITY of ROSEVILLE, CALIFORNIA

Baker-Williams Engineering Group
 Engineering / Surveying / Land Planning / Entitlement Processing / GPS Services
 6020 Rutland Drive, Suite 19 - Carmichael, CA 95608
 (916) 331-4335 - fax: (916) 331-4430 - office@bwiengineers.com



EXISTING GENERAL PLAN DESIGNATIONS

SCALE: 1"=200'



PROPOSED GENERAL PLAN DESIGNATIONS

SCALE: 1"=200'

GENERAL PLAN AMENDMENT EXHIBIT
SVSP PARCELS JM-01 AND FD-7
CITY of ROSEVILLE, CALIFORNIA

SCALE: 1"=200'
JOB #: 20-06-027
DATE: DEC., 2021

BW BAKER-WILLIAMS ENGINEERING GROUP
 Engineering / Surveying / Land Planning / Entitlement Processing / GPS Services
 6020 Rutland Drive, Suite 19 • Carmichael, CA 95608
 (916) 331-4335 • fax: (916) 331-4430 • office@bweengineers.com